



CONFERENZA AMFM2008

TAVOLA ROTONDA

Informazione Geografica e tecnologia GIS

Stato dell'arte e prospettive di sviluppo

Il punto di vista dell'industria

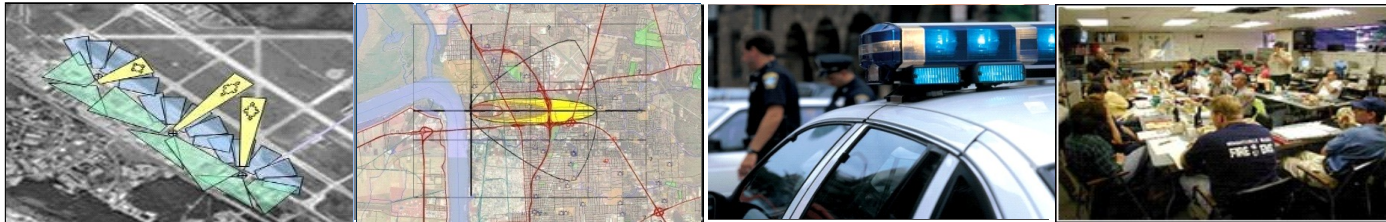
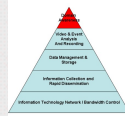
Andrea Fiduccia, Intergraph Italia LLC

Temi di discussione

- Accessibilità ed integrazione dell'informazione (IDT e Web Semantico)
- Strumenti avanzati di analisi e comunicazione
- Location Based Services (LBS)
- Tecniche di base
- Sensori e fonti di dati

Accessibilità ed integrazione dell'informazione

Building & Sharing
Domain Awareness



Capture

**Display, Integrate,
Analyze**

Respond

Coordinate



Sensor

Legacy

Knowledge

Analytical Aids

BAD

Reporting

Interoperability

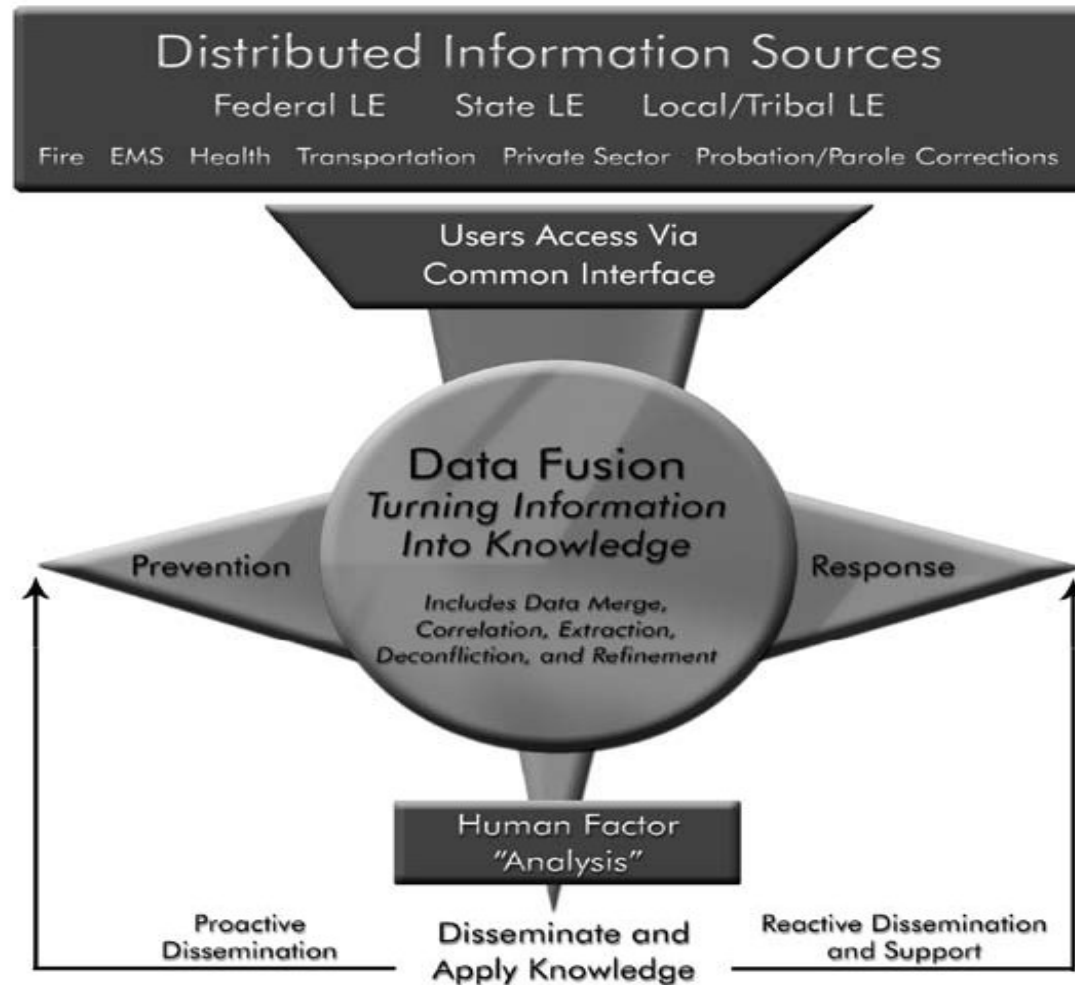
Asset Mgmt

GEOSPATIAL TECHNOLOGY

Common User Defined Operational Picture

Accessibilità ed integrazione dell'informazione

Fusion Centers: Turning Information into Actionable Intelligence

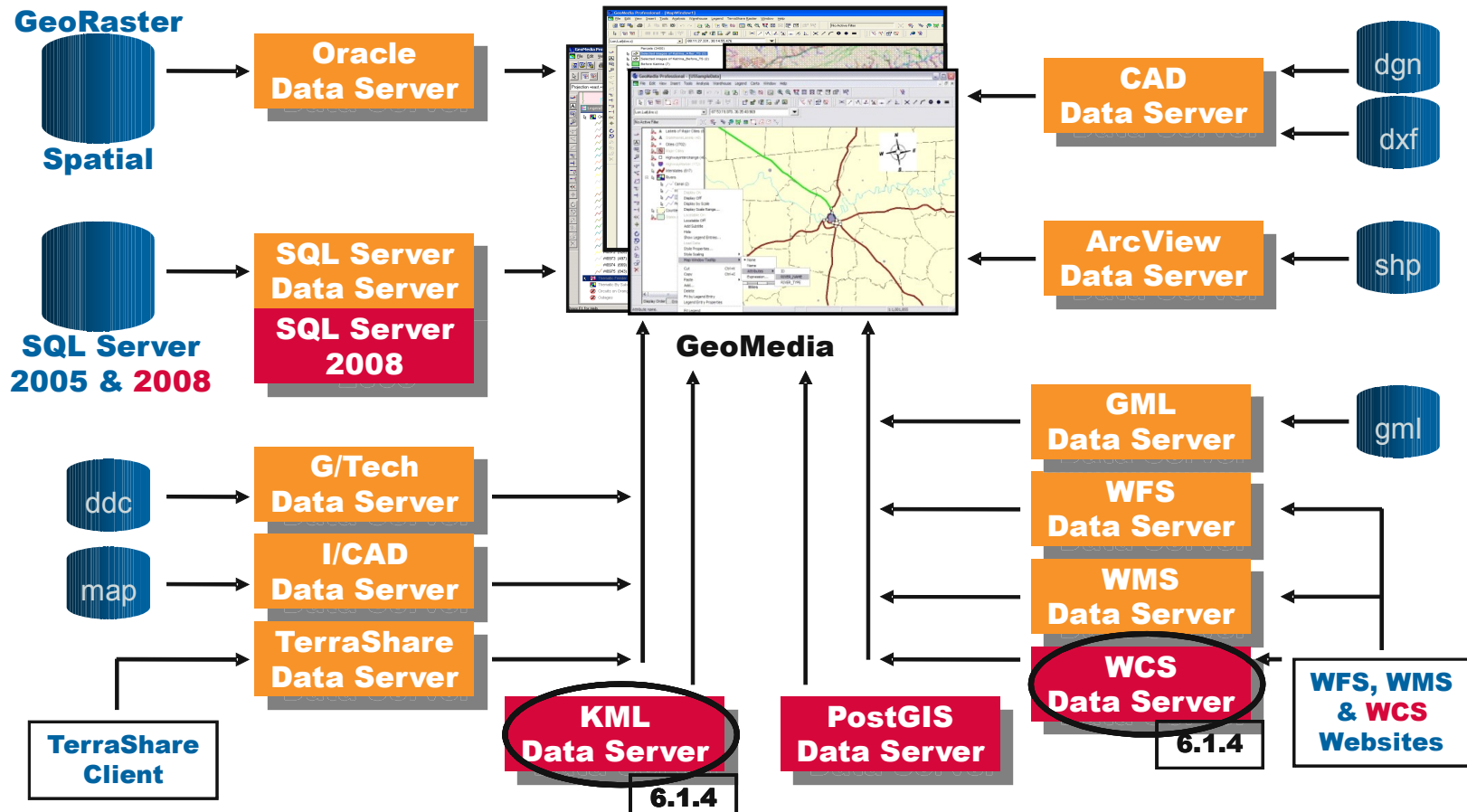


Accessibilità ed integrazione dell'informazione



GeoMedia 6.1 Minor Releases

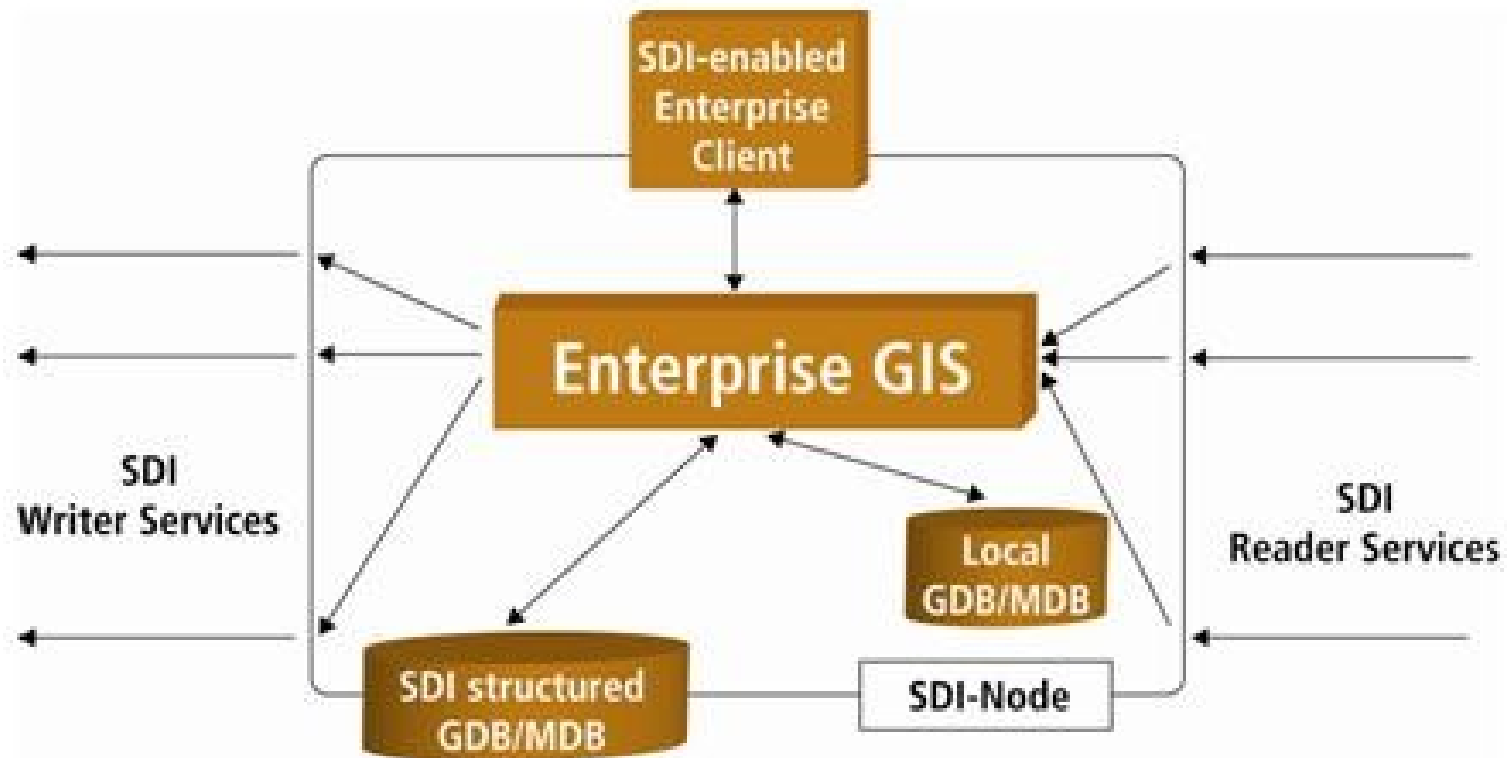
Access to more data sources and open, standard formats



Scenario di Riferimento per l'evoluzione dell'interoperabilità del Client GIS Desktop

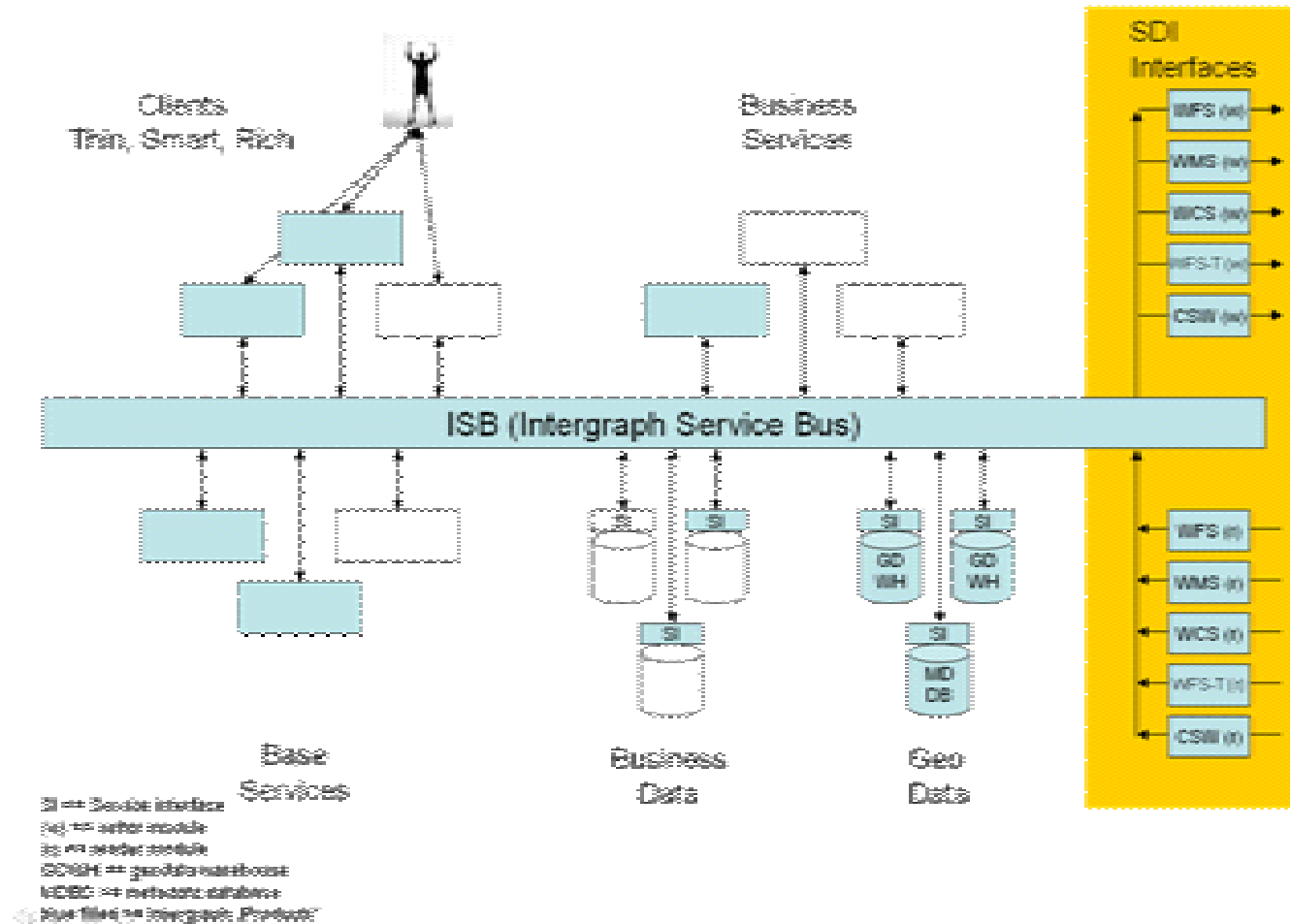
Accessibilità ed integrazione dell'informazione

Principle Architecture of SDI implementation



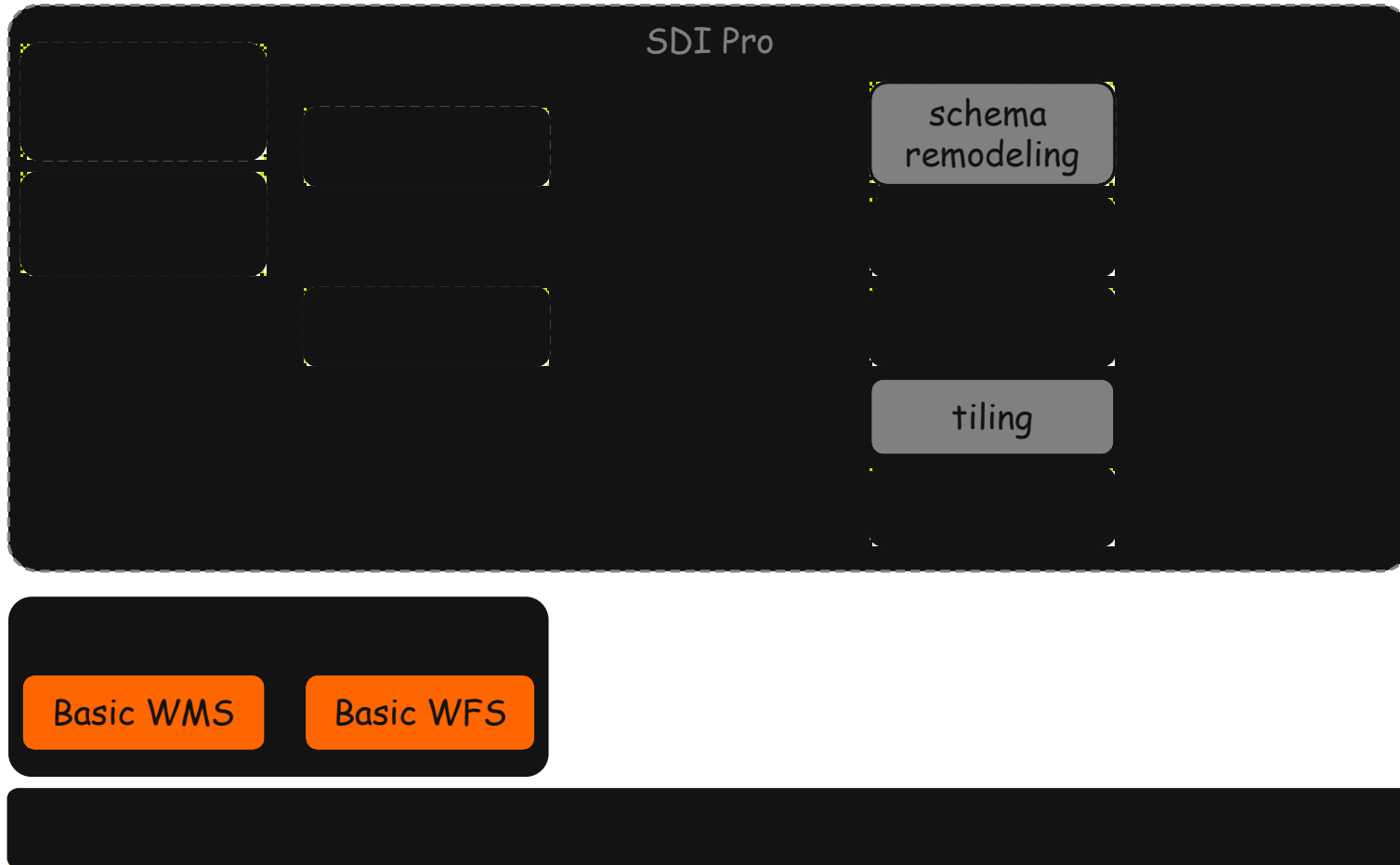
Accessibilità ed integrazione dell'informazione

SDI: Inner node architecture



Accessibilità ed integrazione dell'informazione

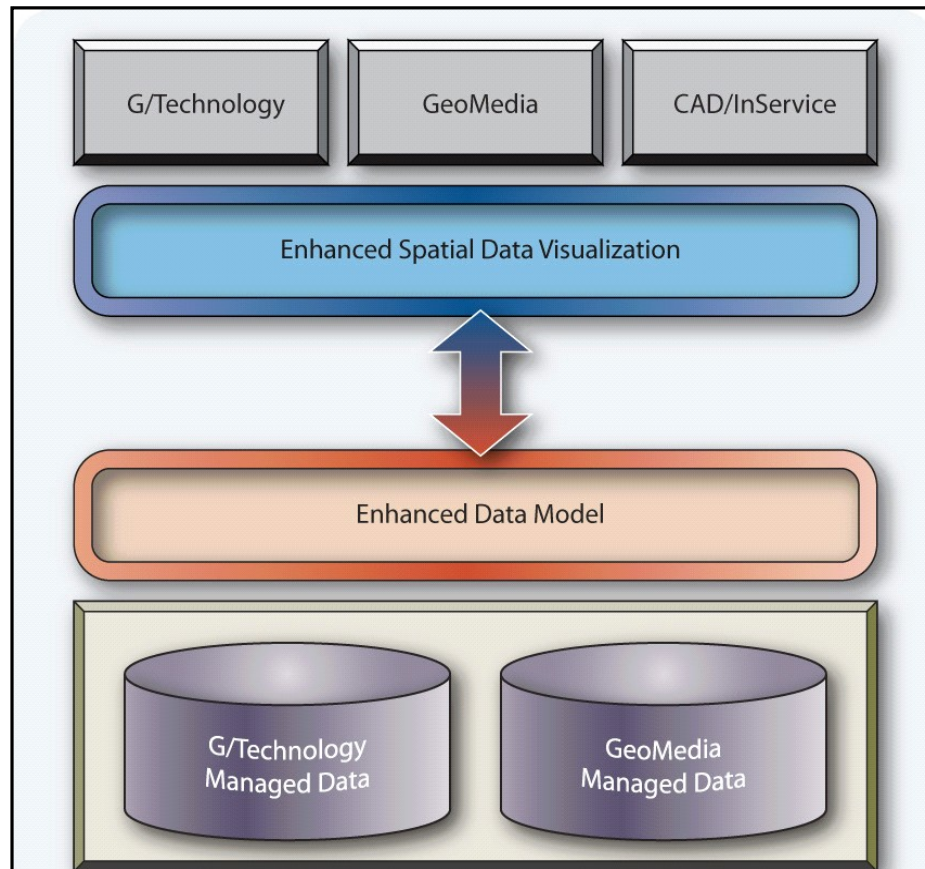
SDI Pro – „bricks to build the house”



Accessibilità ed integrazione dell'informazione



GeoMedia 7.0



Consolidation of SG&I Platforms

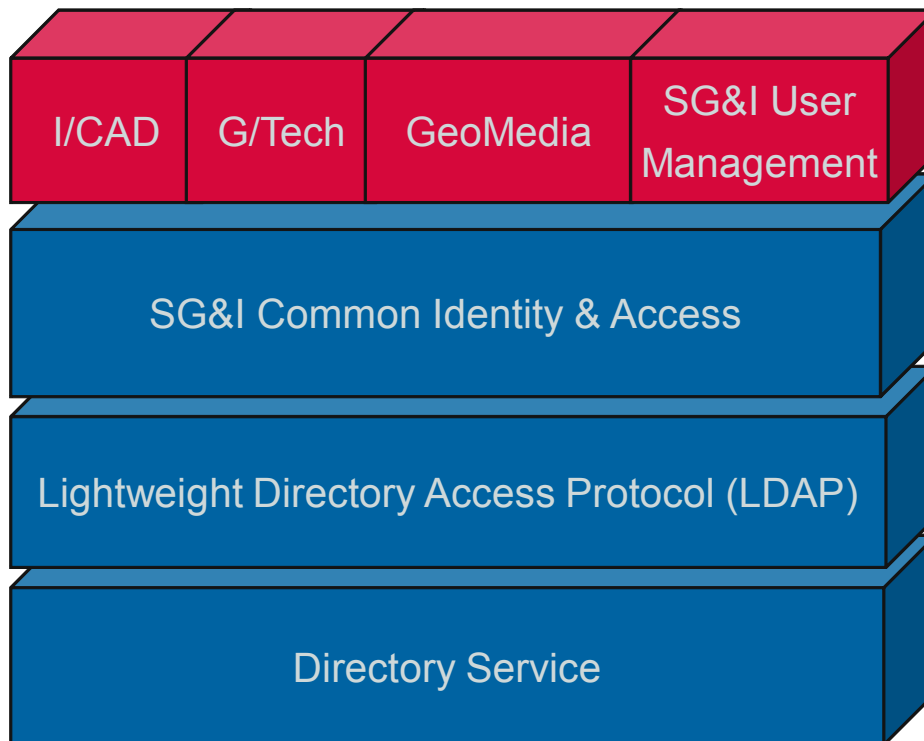
- Share data seamless with other SG&I products
 - Centralized, consistent access across all applications
 - Business rules are honored at all times
- For GeoMedia specifically:
 - Better display performance both vector and raster
 - Tighter integration with 3rd party products like Virtual Earth and Google Earth
 - Metadata driven complete with metadata configuration tools
 - Role-based access to data
 - Advanced feature modeling
 - Improved layout and printing

Lo Scenario di Riferimento: piena integrazione delle piattaforme GIS (GeoMedia), gestione delle reti tecnologiche (G/Tech) e Public Safety (I/CAD)

Accessibilità ed integrazione dell'informazione



GeoMedia 7.0



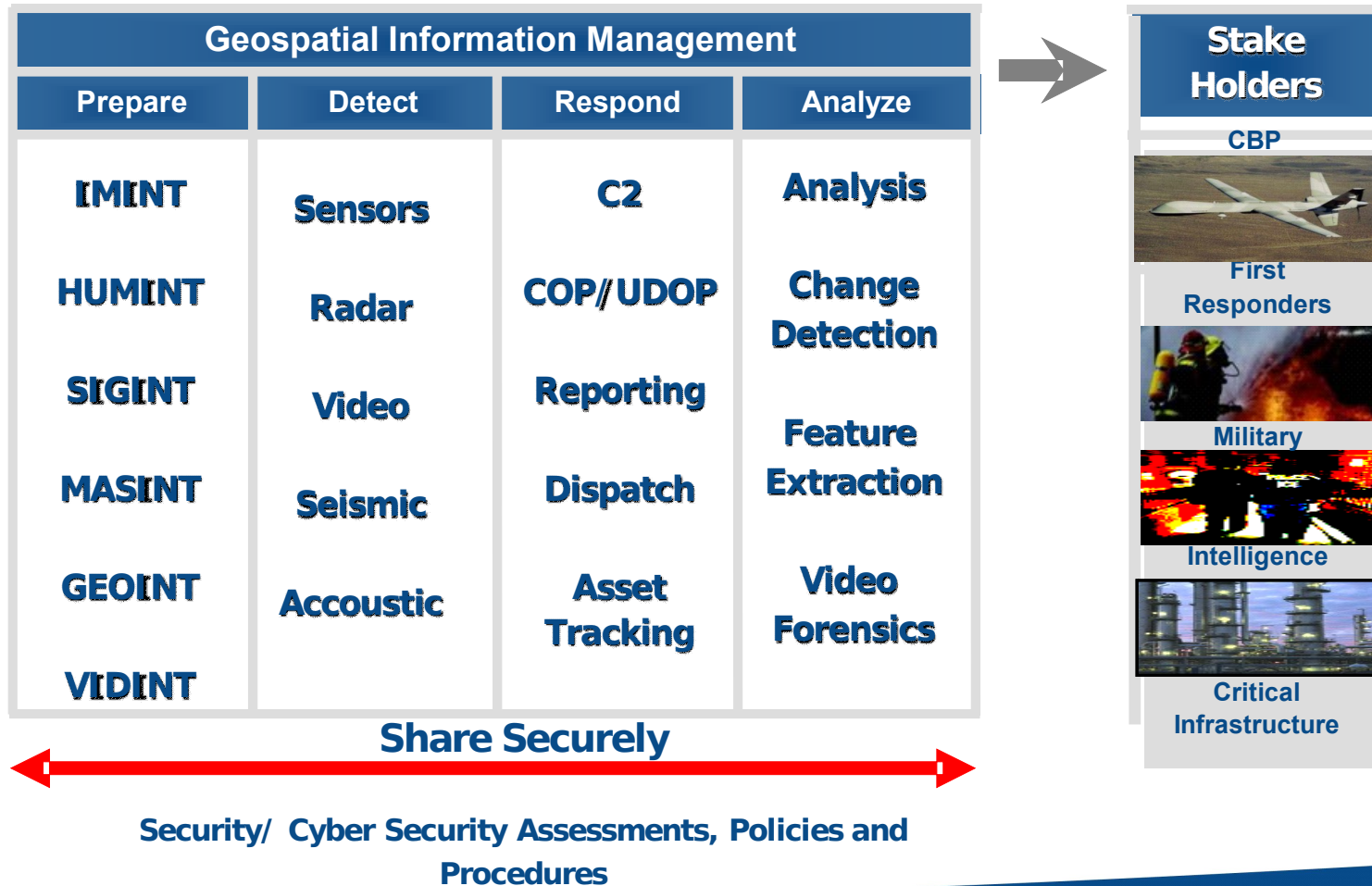
Identity and Access Management (Single-Sign On)

- Centralized administration of user accounts from a single utility across all SG&I products
- Use existing operating system architecture
- Remove user accounts one time
- Safe and secure
- For GeoMedia specifically:
 - Single set of credentials (username & password) provides access all data sources
 - Permissions to data, functionality is controlled via roles and groups

Lo Scenario di Riferimento: piena integrazione delle piattaforme GIS (GeoMedia), gestione delle reti tecnologiche (G/Tech) e Public Safety (I/CAD)

Accessibilità ed integrazione dell'informazione

Leveraging Secure Geospatial Information Management for Situational Awareness



Strumenti avanzati di analisi e comunicazione

MetaCarta Integration

The screenshot displays the GeoMedia Professional interface with a map of the United States. A news article window is open, showing the following content:

WTOP: Iowa Prof. Seeks Funding for 'Body Farm'
June 9th, 2006
Nov 29th - 7:43am
By TODD DVORAK; Associated Press Writer

CEDAR FALLS, Iowa (AP) - Iowa's rich topsoil and climate have nourished some of the nation's most plentiful corn and soybean crops. Tyler O'Brien wants to learn more about their influence on rotting corpses.

A biological anthropology professor at the University of Northern Iowa, O'Brien envisions turning some prime Iowa pasture into a body farm, where human bodies buried, stuffed in car trunks or exposed to the elements can provide scholars and criminalists with new benchmark data on human decay.

"This idea has strong scientific value," O'Brien said. "To answer the question of how long a body has been dead, how long a person has been missing, is critical to criminal investigations."

O'Brien is seeking a grant of \$400,000 to \$500,000 from the National Institute of Justice and other organizations to obtain the land and set up the project.

If approved, the body farm would be just the second in the nation and closely modeled after the work pioneered by O'Brien's mentor, William Bass III, at the University of Tennessee's Forensic Anthropology Center.

Inside a secure, three-acre parcel near the Tennessee campus, Bass and his team have spent more than 30 years painstakingly documenting the decay of bodies buried in coffins and shallow dirt graves, partially submerged in a pond, or exposed to bugs, rodents and hot, muggy summers.

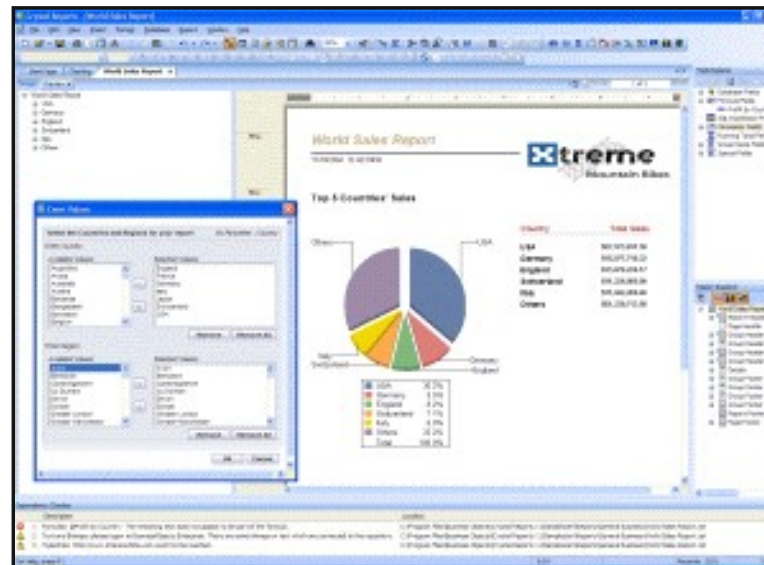
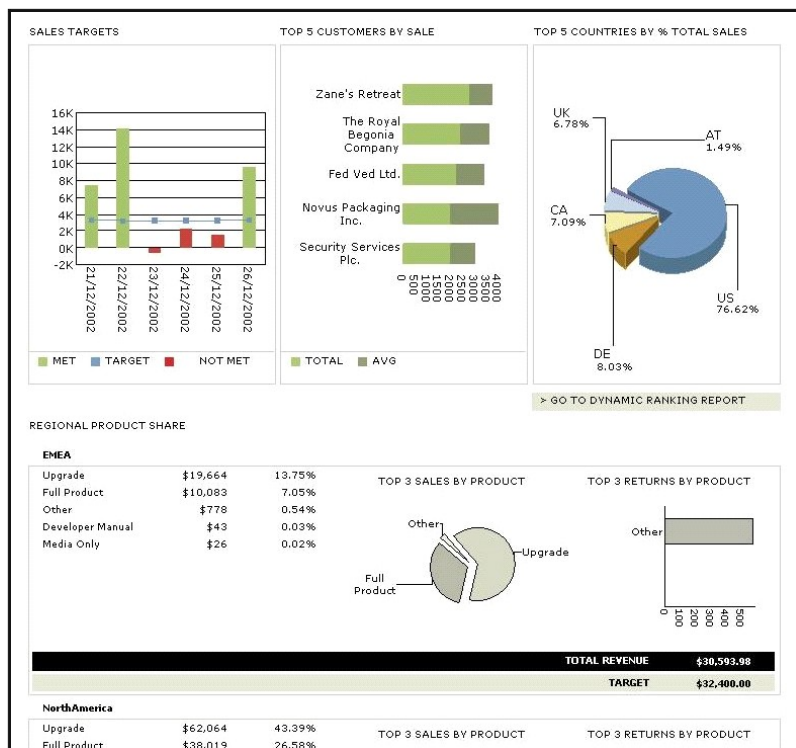
Bass' project and research have been used to teach hundreds of criminalists and served as a centerpiece in a variety of books, including crime writer Patricia Cornwell's 1994 best seller "The Body Farm" and Bass' own memoir "Death's Acre."

The properties window for the MetaCarta result shows:

General	Attributes
Name	Value
ID	37
Relevance	0.265833
Title	WTOP: Iowa Prof. Seeks Funding for 'Body Farm'
URL	http://www.wtop.com/?nid=220&sid=633408
Extracted text	... served as a centerpiece in a variety of books, including cbr

Strumenti avanzati di analisi e comunicazione

Business Intelligence for Public Safety Reporting

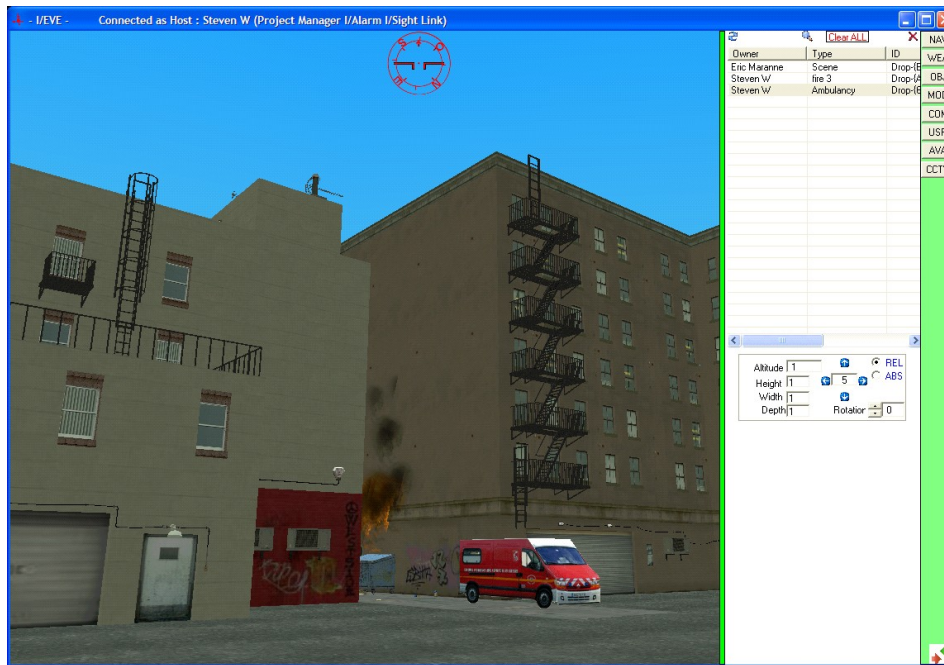


Strumenti avanzati di analisi e comunicazione



I/Simulator – EVE

- Extended Virtual Environment (EVE)
- VRML-based virtual environment with object modeling and intelligence



- Augments simulation reality via integration of interactive real-time 3D

- Instructor and students can watch the scenario unfold in a 3D world

- Instructor can inject events using point and click actions

September 23, 2008

– 132 –

Location Based Services

Football World Cup - Germania 2006

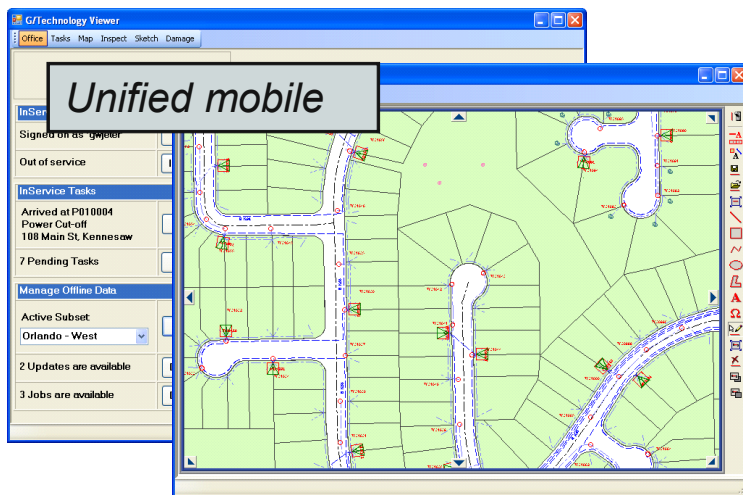
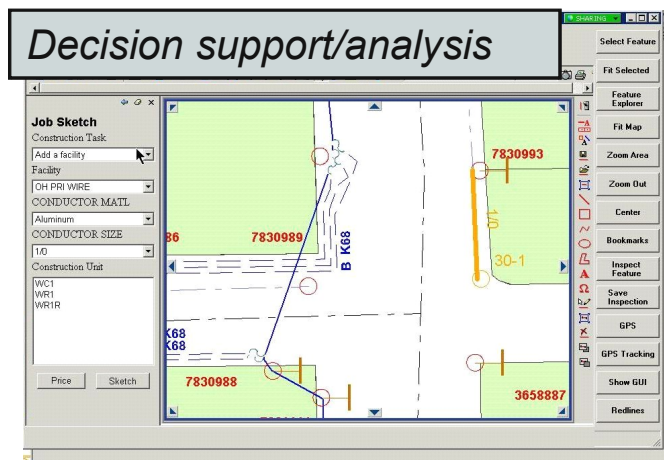
INTERGRAPH



Location Based Services



Field Force Automation – v9.4.0



- Usability enhancements
 - Increase productivity
 - Enhance decision support/analysis
- Unified mobile application in the truck
 - Consolidated field GIS and mobile workforce viewer
 - Round trip data capture workflows
 - Reduce errors and data redundancy
 - Improves data integrity
 - Field Inspection
 - Field Design
 - Damage Management

Ambiente “Mobile” potenziato per la piattaforma di gestione delle reti tecnologiche (G/Tech)

June 3, 2008

– 19 –

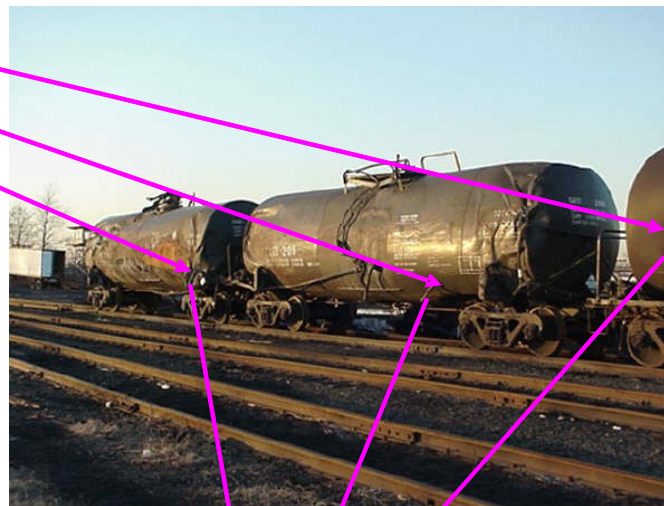
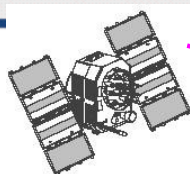
G/Technology

Location Based Services

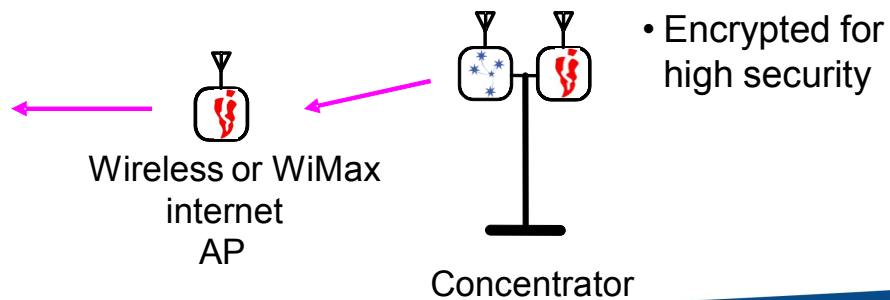
Integrazione RFID



GPS

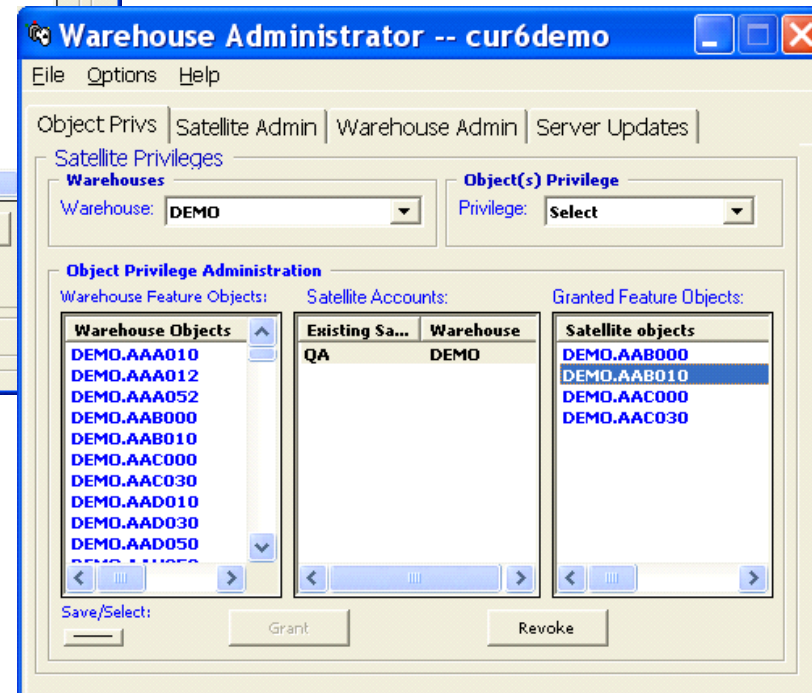
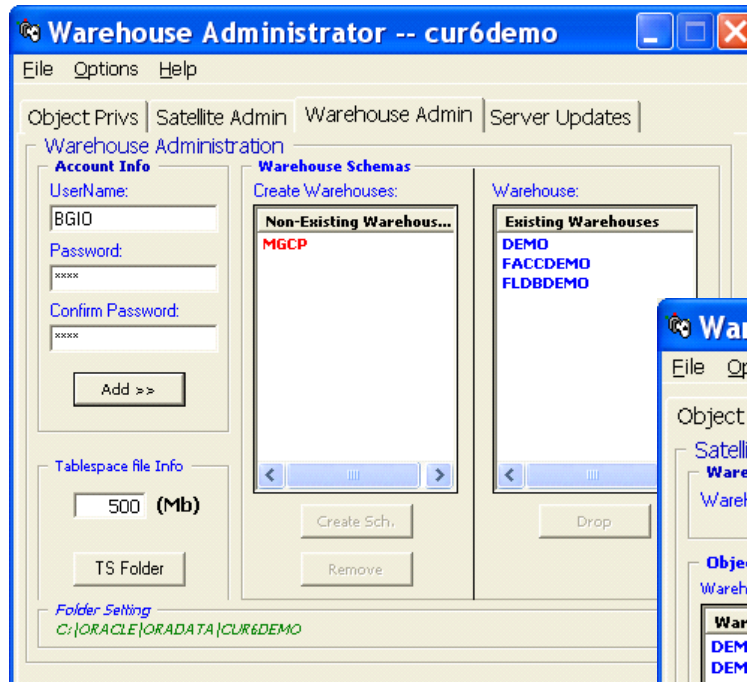


Security Operations Center



Tecniche di base

Data Model Maintenance - Database Curator



Produzione di DB Topografici
Multiscala nell'ambiente GIS:
rimappatura di schemi e code
di validazione

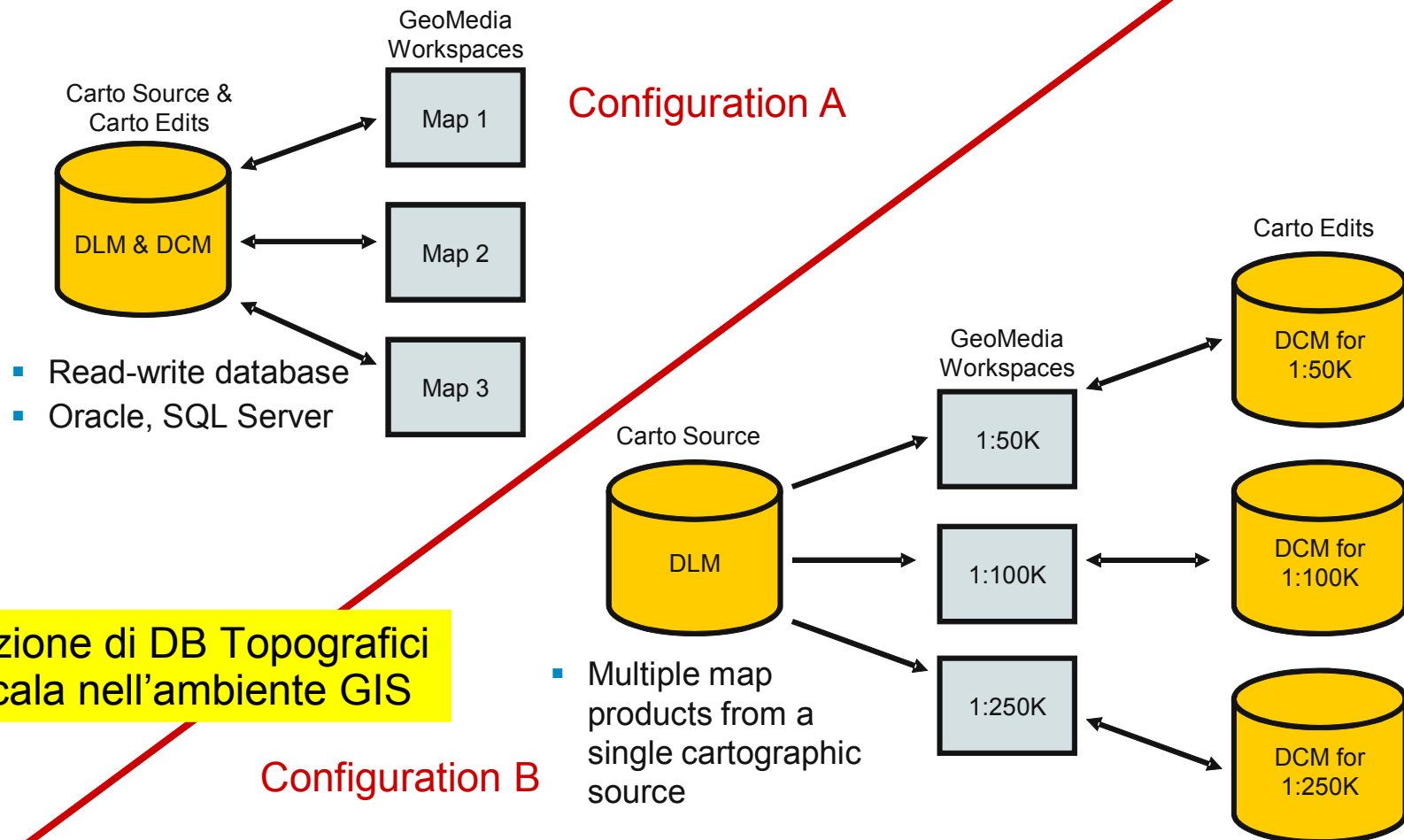
September 23, 2008

- 16 -

Tecniche di base



GeoMedia Map Publisher - Overview



Produzione di DB Topografici Multiscala nell'ambiente GIS

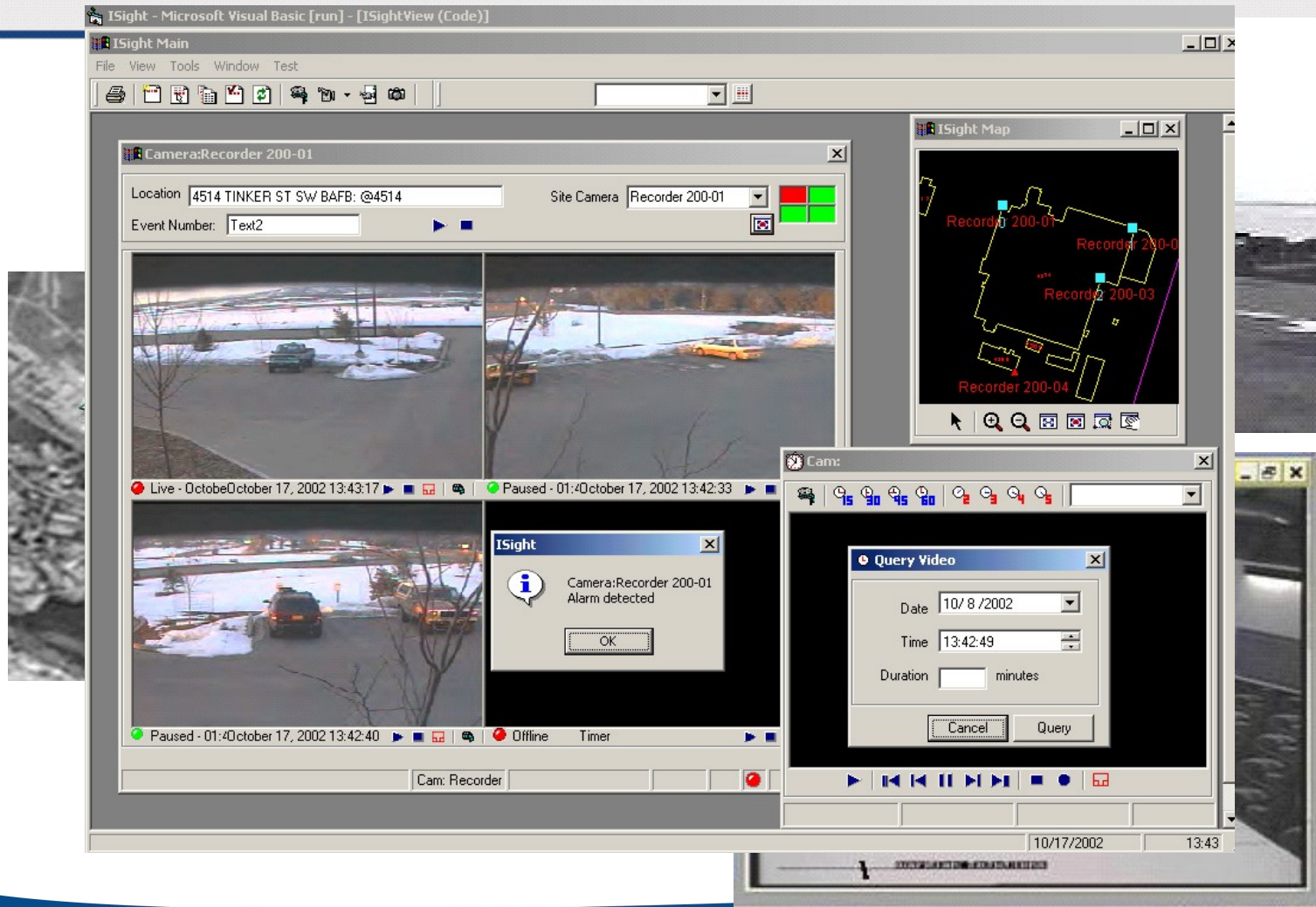
September 23, 2008

- 14 -

GeoMedia

Sensori e fonti dati

Intelligent Video



Sensori e fonti dati

I/Sensor



Zones of intrusion and detection

Track Information
Track:T3000
Speed:0
Confidence:1
Altitude:0
Heading:0
Threat:True

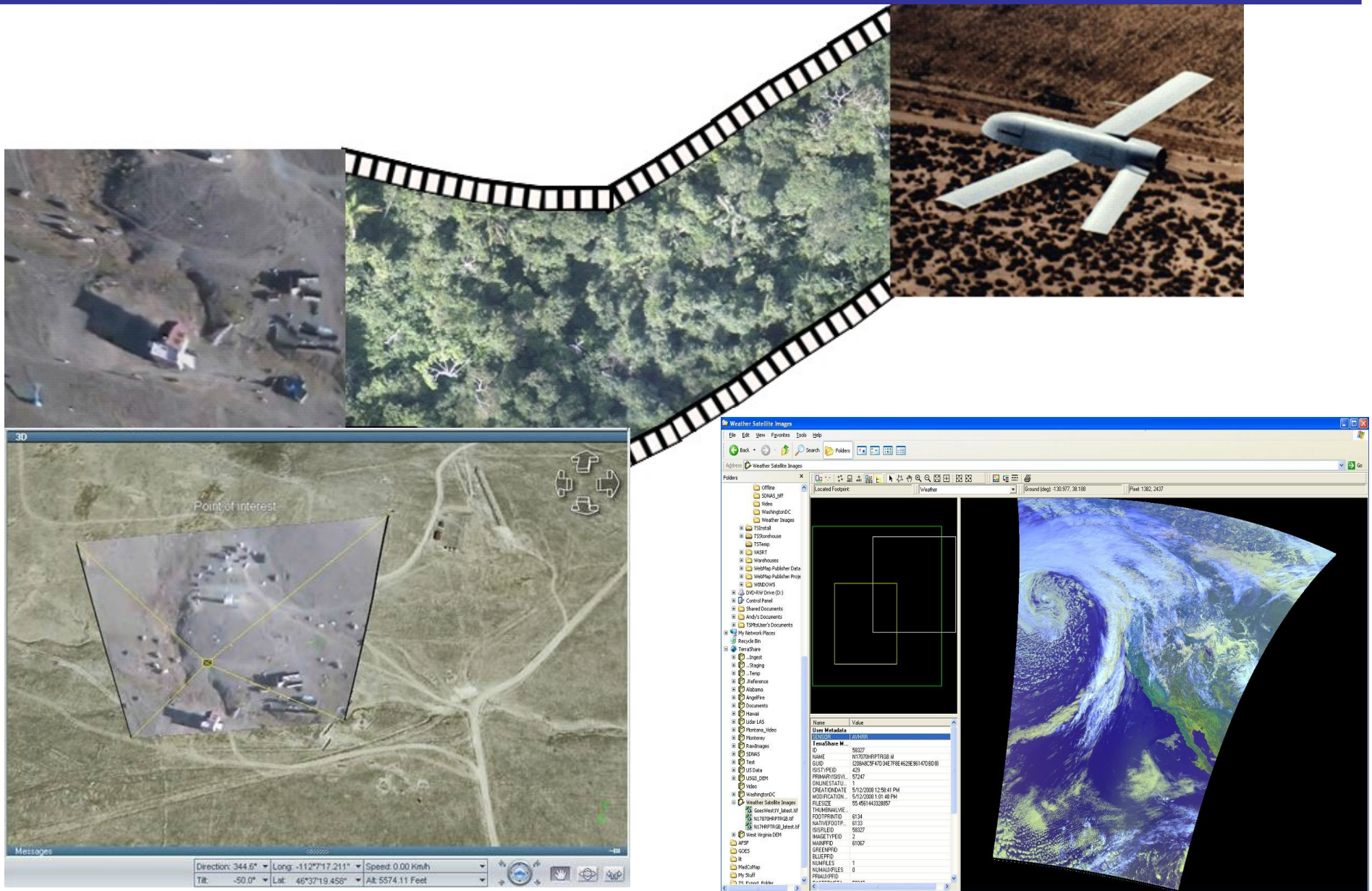
Cameras:
[Live](#)
Archive:
[30s](#) [60s](#) [90s](#)
[2m](#) [5m](#) [Query](#)
[Close](#)

2-way interface to sensor types – radar, CBRN, smart video cameras, etc

Supports emerging SensorNet standard from Open GIS Consortium

Draw Conditional Zone: Lon:-73.48:12.50 Lat:40:48:43.95 1:8,906 13/03/2006 02:38 PM

Sensori e fonti dati



24-25 Settembre 2008

Conferenza AMFM2008

Andrea Fiduccia
Intergraph Italia LLC